



**Adirondack  
Park Agency**

**Department of  
Environmental Conservation**

# **Sharp Bridge Campground & Day Use Area**

**Public Draft Unit Management Plan**

**November 17, 2022**

# Campground GEIS Overview (1990)

Generic UMP/GEIS is broken into three volumes.

Volume I- Generic EIS, contains overview, environmental setting, goals, policy and mgt. criteria universally common to all IUAs

Volume II- Site specific document containing biological, physical, and built infrastructure inventories along with site specific mgt. objectives for each IUA.

Volume III- Contains reference material and support data to Volumes I & II



# Campground GEIS (1990)

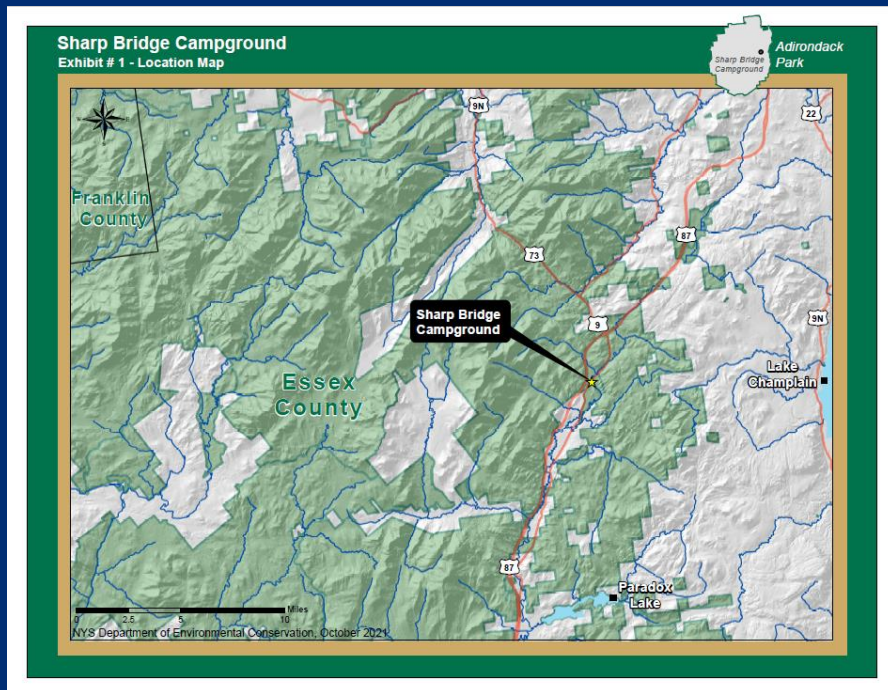
## Volume I- Management topics discussed in GEIS

- Facility & Site Rehabilitation & Reclamation
- Vegetation Management
- Land Acquisition
- Water
- Sewage
- Trailer Dump Stations & Toilets
- Showers
- Accessibility
- Road & Parking
- Refuse
- Play & Sports
- Boat Launch & Fishing/Waterway Access Sites
- Firewood Bldg. (2010), EV Chargers (2019), Boat Wash (2022)

# Campground Location Overview

Town of  
North Hudson  
Essex County

19 Acres



# Sharp Bridge Campground



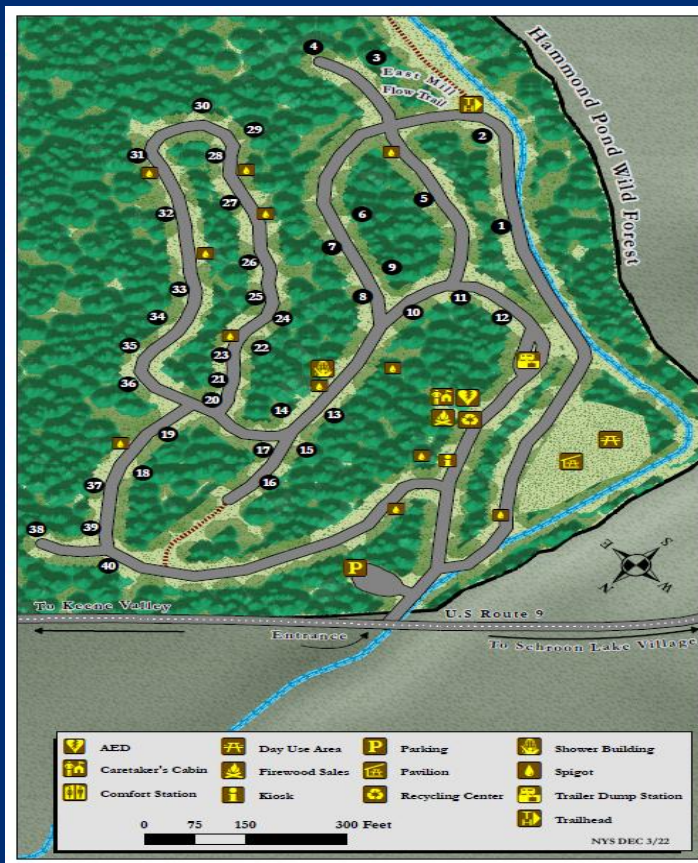
The Public Camp Site at Sharp Bridge Is in a Pine Forest on a Side Hill Camp on One of the Lower Levels.



# Sharp Bridge Campground

- Town of North Hudson, Essex County
- 40 campsites
- Campsite capacity: 240
- Day use area capacity: 60
- Opened in 1920 and is one of the oldest State campgrounds
- Adjacent to Schroon River (WSRR) and surrounded by the 45,619 acre Hammond Pond Wild Forest

# Sharp Bridge Campground Facilities



# Sharp Bridge Attendance & Revenue

	Five-Year Revenue Totals for Sharp Bridge				
Year	Camping	Day Use	Firewood	Ice	Total
2021	\$ 29,768	\$6	\$432	\$208	\$30,414
2020*	\$19,847	\$0	\$0	\$0	\$19,847
2019	\$34,946	\$20	\$486	\$340	\$35,792
2018	\$33,878	\$14	\$ 990	\$288	\$35,170
2017	\$35,460	\$28	\$2,052	\$296	\$37,836
Avg	\$30,780	\$14	\$792	\$226	\$31,812

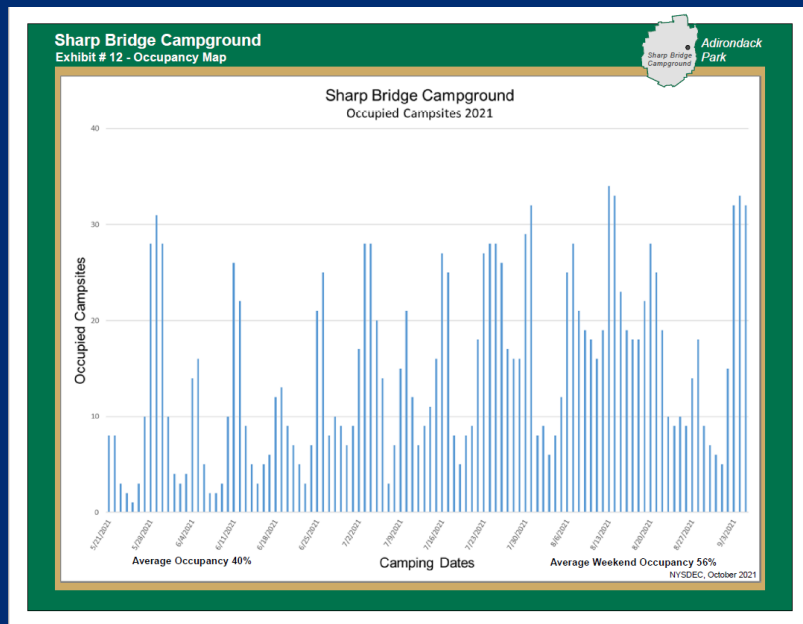
Sharp Bridge Attendance			
Year	Camping	Day Use	Total
2021	3,857	4	3,861
2020*	2,393	0	2,393
2019	4,371	23	4,394
2018	4,428	6	4,434
2017	4,860	23	4,883
Avg	3,982	11	3,993

\*2020 Attendance impacted by the Covid-19 Pandemic



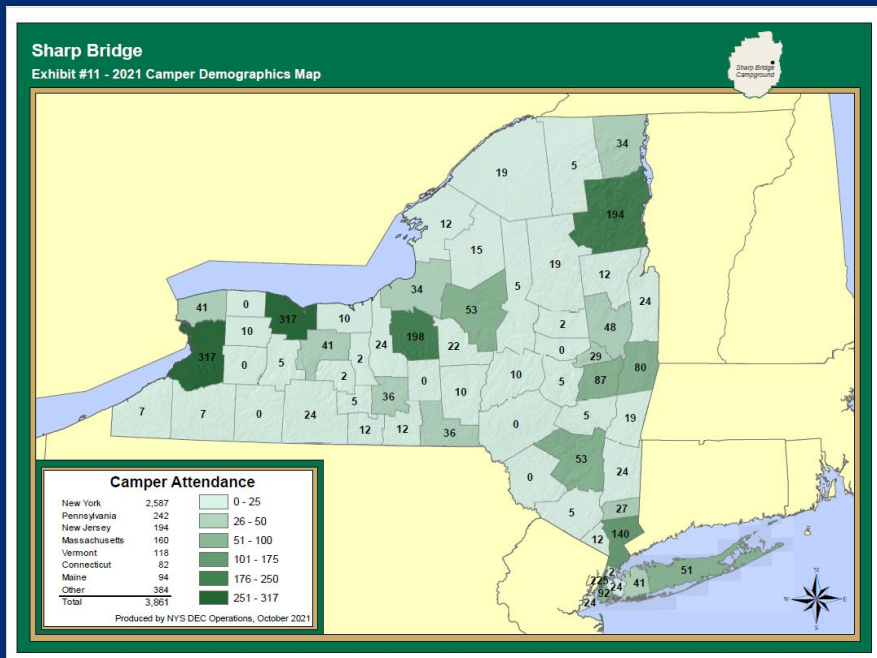
# Sharp Bridge Visitor Demographics

- Overall site utilization rate 46%
- Weekend utilization 56%
- Average length of stay 2.4 nights



# Sharp Bridge Visitor Demographics

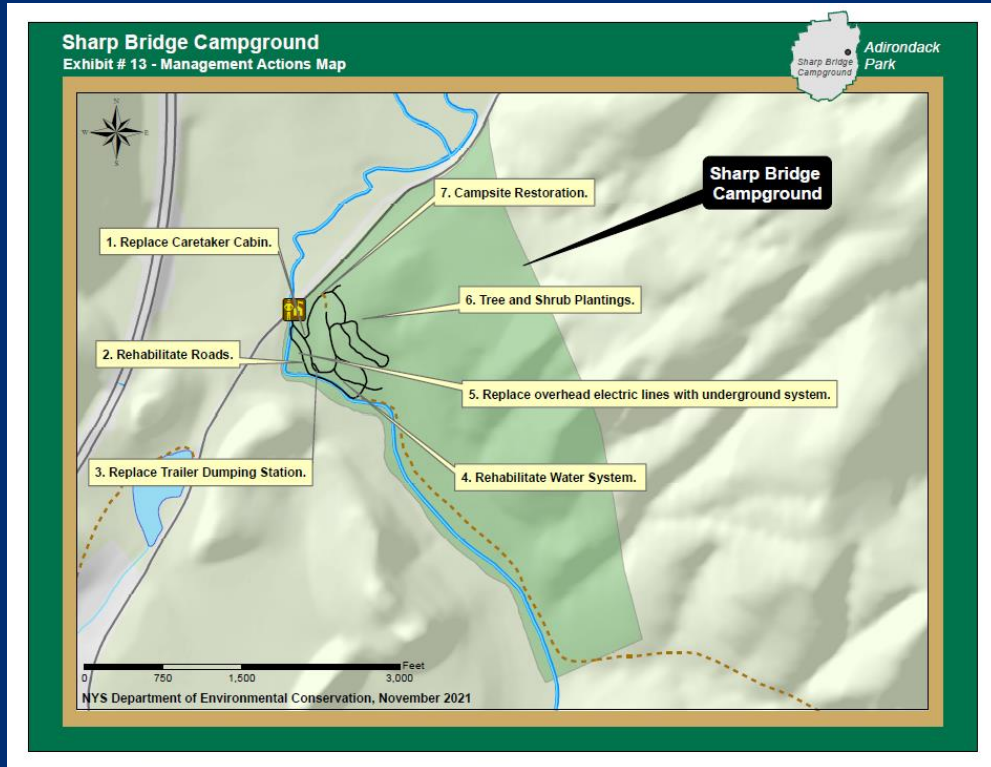
- 66% NYS residents
- Most NYS campers from western New York and Essex County
- Camper satisfaction rate of 83%



# Sharp Bridge Invasive Species

- A regulation is in effect prohibiting the import of firewood into New York unless it has been heat treated to kill pests. The regulation also limits the transportation of untreated firewood to less than 50 miles from its source.
- The Adirondack Park Invasive Plant Program reported that Purple Loosestrife was observed in the campground along the Schroon River and monitoring should be a top priority and managed as resources become available. If possible, a release of biocontrol beetles should take place.

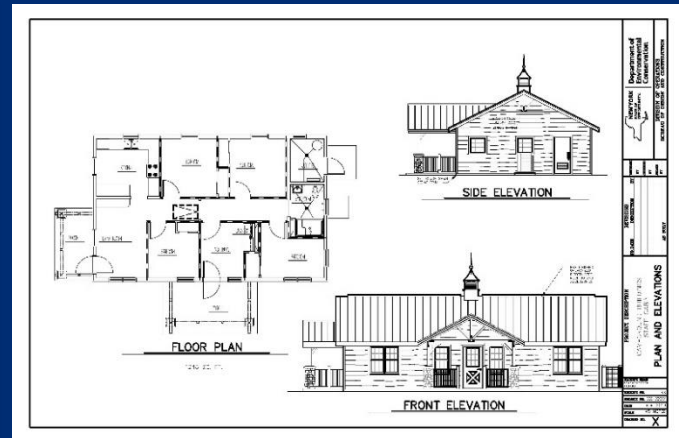
# Sharp Bridge Campground Mgmt. Actions



# Proposed Management Actions

## 1. Replace caretaker cabin

- Siting will prioritize the use of existing cabin footprint to limit clearing of existing vegetation and minimize topographic alterations.

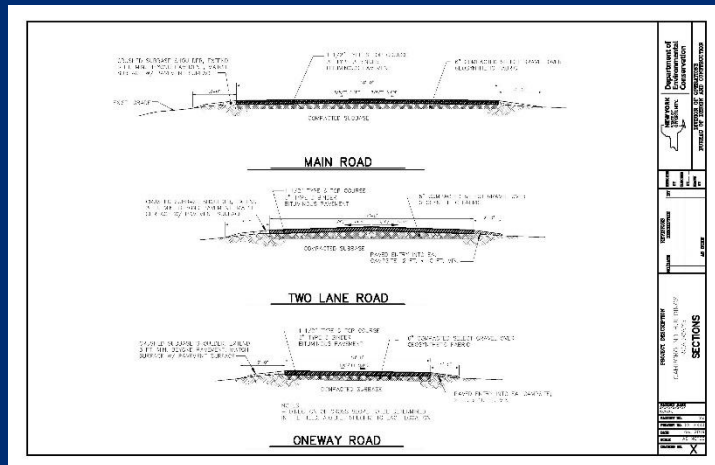


Proposed Staff Housing

# Proposed Management Actions

## 2. Rehabilitate roads

The .90 mile of interior campground road is in poor condition with crumbling shoulders and potholes. The entire roadway needs to be repaved, while the additional .28 mile of campsite driveway and access roads should be maintained as gravel. Utilization of the existing roadbed will minimize tree removal.



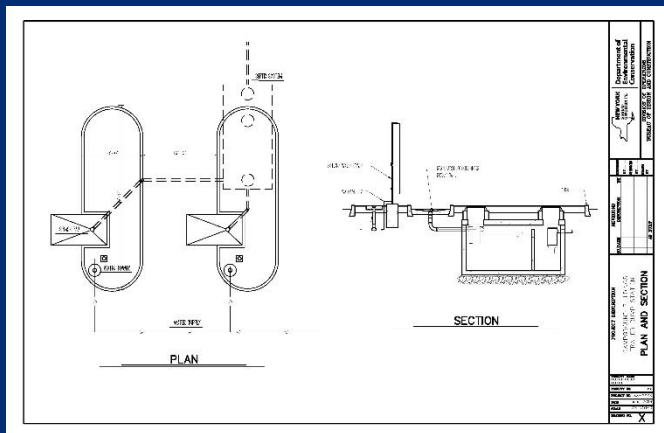
# Proposed Management Actions

## 3. Replace Trailer Dumping Station



Existing Dump Station

Proposal to replace existing dumping station with a new single lane dumping station with improved septic system. Will adhere to 150' WSRR setback from the Schroon River.

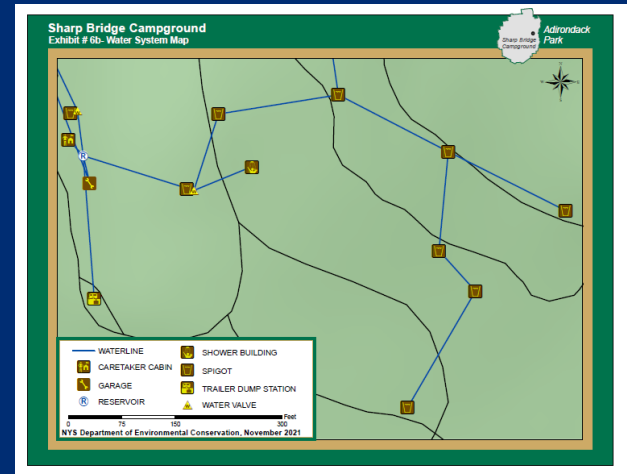
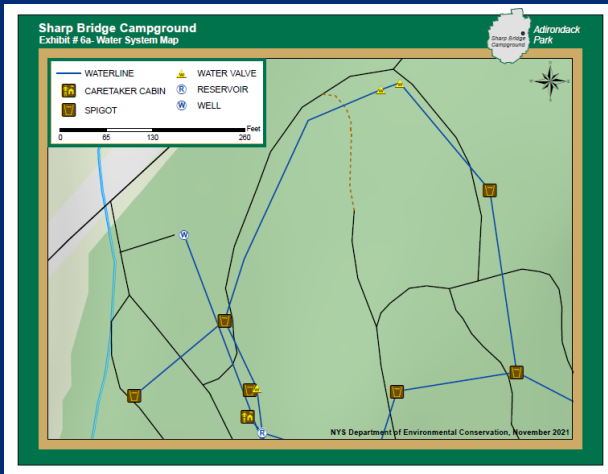


Proposed Dump Station (Note single lane for this facility)

# Proposed Management Actions

## 4. Rehabilitate Water System

- Rehabilitate entire water system to meet DOH regulations and accessibility standards
  - Replace waterlines
  - Replace tanks
  - Replace well pump and piping
  - Add additional accessible spigots
  - Plant trees and shrubs in areas where vegetation was disturbed during rehabilitation

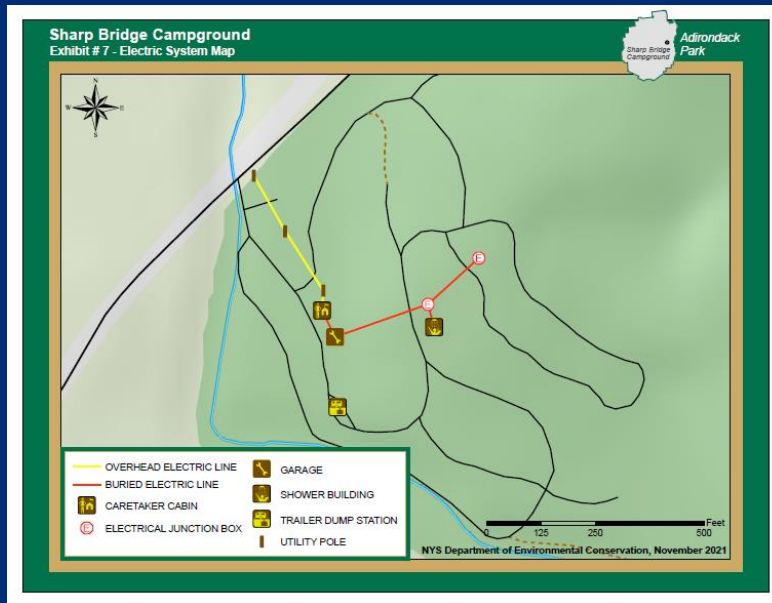




# Proposed Management Actions

## 5. Replace Overhead Electrical Lines with Underground System

- Replace 354' of overhead lines with underground system
- Move pole mounted transformers to ground pad mount
- Plant trees and shrubs where vegetation was disturbed during replacement



# Proposed Management Actions

## 6. Tree and Shrub Planting

- New trees and shrubs are required to replace those lost to hazardous tree removal and to establish trees in high-traffic areas where natural regeneration is unlikely to occur
- Species will be selected that are natural to the area and will provide the needed shading and screening

## 7. Campsite Restoration

- Each year, a minimum of one (2.5%) campsite at Sharp Bridge is selected for temporary closure to complete restoration work
  - Restoration work may include replacement of lost soils, surface grading, drainage improvements, and replacement of fireplaces and picnic tables
- Emphasis on mitigation of environmental and user impacts
- For more information on the Campsite Restoration project or which sites at Sharp Bridge Campground are currently being restored, please visit <https://www.dec.ny.gov/outdoor/100146.html>

# Thank You

- Josh Houghton
- EPS 2 (Natural Resources)
- [josh.houghton@dec.ny.gov](mailto:josh.houghton@dec.ny.gov)
- (518) 408-5959

## Connect with us:

Facebook: [www.facebook.com/NYSDEC](http://www.facebook.com/NYSDEC)

Twitter: [twitter.com/NYSDEC](https://twitter.com/NYSDEC)

Flickr: [www.flickr.com/photos/nysdec](http://www.flickr.com/photos/nysdec)



# Adirondack Park State Land Master Plan Conformance Review



# Guidelines for Management and Use - Basic Guidelines (SLMP pg. 41)

Primary management guideline will be to provide:

- public opportunities for recreation
- in a setting and scale in harmony with the relatively wild and undeveloped character of the Adirondack Park



# Guidelines for Management and Use – Basic Guidelines (SLMP pg. 41)

All intensive use facilities should be located, designed and managed:

- to blend with the Adirondack environment;
- to have minimum adverse impact on surrounding state and private lands



# Guidelines for Management and Use – Basic Guidelines (SLMP pg. 41)

Construction and development activities will:

- avoid material alteration of wetlands;
- minimize extensive topographic alterations;
- limit vegetative clearing;
- preserve the scenic, natural and open space resources of the intensive use area.

# Guidelines for Management and Use: Campgrounds (SLMP pg. 42)

- Rustic nature
- Natural character
- Natural materials
- Shoreline setbacks





# Guidelines for Management and Use: Campgrounds (SLMP pg. 43)

The older, existing campgrounds will be rehabilitated and reconstructed as soon as possible to reflect modern site planning principles that will better blend the facilities with the environment and comply with the provisions of the SLMP.



# DEC & APA Joint Public Comment Period

DEC and APA will be accepting comments until **December 19, 2022** regarding the public draft of the Sharp Bridge Campground and Day Use Area UMP.

Comments may be relayed to:

Megan Phillips

NYSAPA

Deputy Director, Planning

PO Box 99

1133 State Route 86

Ray Brook, NY 12977

Email:

SLMP UMP Comments@apa.ny.gov

(underscores between words)

Josh Houghton

NYSDEC

EPS 2 (Natural Resources)

625 Broadway – 3rd floor

Albany, NY 12233-5253

Email:

[Campinfo@dec.ny.gov](mailto:Campinfo@dec.ny.gov)

